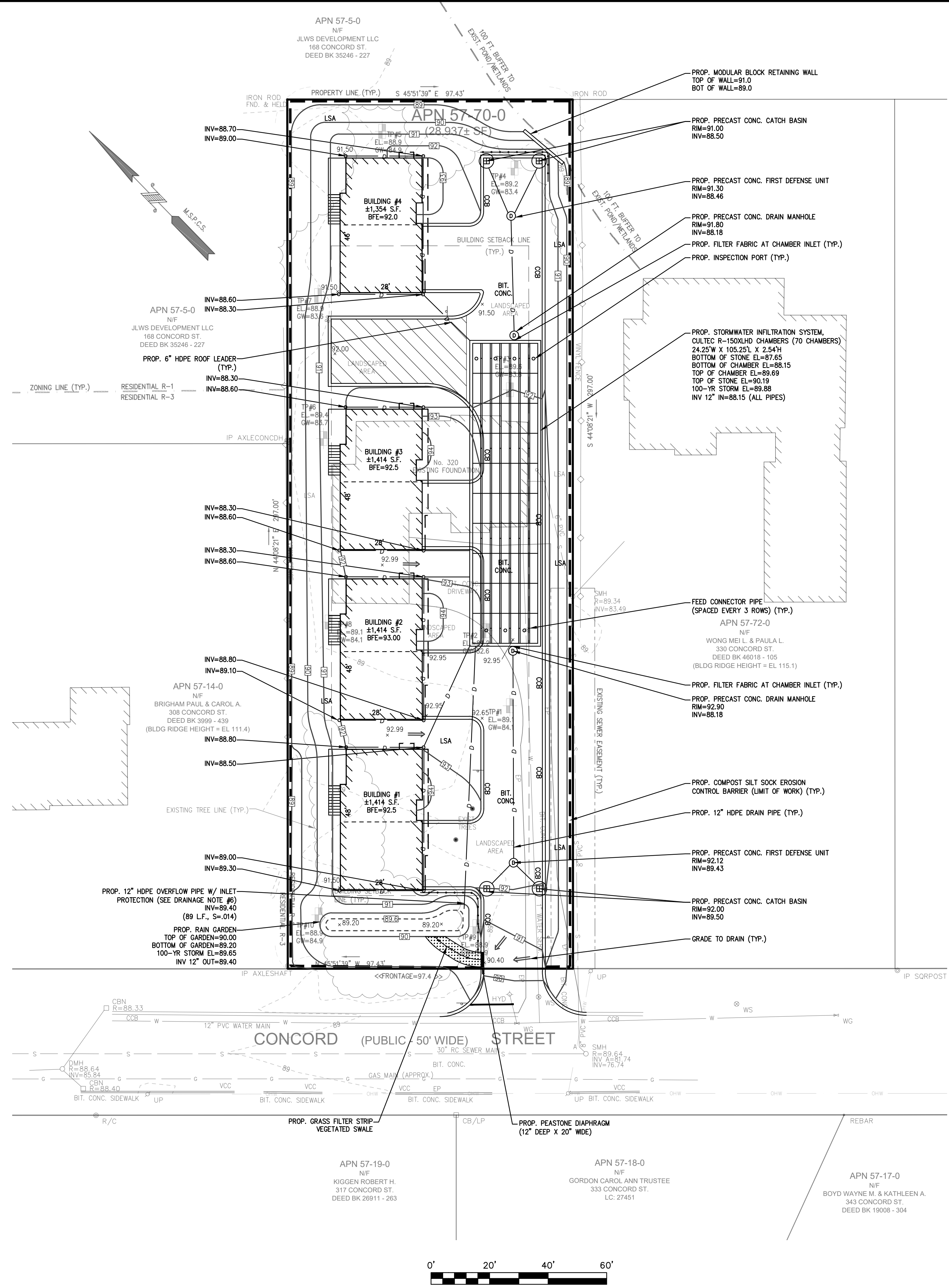


LOCUS MAP
Not to Scale



ABBREVIATIONS

FFE	FIRST FLOOR ELEVATION
BIT CONC.	BITUMINOUS CONCRETE PAVEMENT
CCB	CAPE COB BERM
EP	EDGE OF PAVEMENT
BC	BITUMINOUS CONCRETE CURB
(AM)	AS MEASURED
RET WALL	RETAINING WALL
CONC.	CONCRETE
RCF	REINFORCED CONCRETE PIPE
VCC	VERTICAL GRANITE CURB
ETW	EDGE OF TRAVEL WAY
MFL	METAL BERM
VCC	VERTICAL CONCRETE CURB
CMP	CORRUGATED METAL PIPE
LSA	LANDSCAPED AREA

LEGEND

SURVEY SYMBOLS

- REBAR
- ∨ ANGLE IRON
- CB/DH □ CONCRETE BOUND WITH DRILL HOLE
- SB □ STONE BOUND
- SB/DH □ STONE BOUND

UTILITY SYMBOLS

- CHIMNEY
- ELECTRIC HAND HOLE
- GUY POLE
- GUY WIRE
- HVAC UNIT
- BUILDING LIGHT W/MAST
- BUILDING LIGHT TRANSFORMER
- WATER GATE
- EXHAUST VENT
- AIR VENT
- DRAINAGE SUMP
- ELECTRIC MANHOLE
- SEWER MANHOLE
- DRAIN MANHOLE
- TELEPHONE MANHOLE
- DRAINAGE CATCH BASIN
- DOOR WAY THRESHOLD
- HYDRANT
- POST INDICATOR VALVE
- UTILITY POLE
- YARD LIGHT

LINE DESIGNATORS

- WATER MAIN
- HANDRAIL
- JERSEY BARRIER
- GUARD RAIL
- OVERHEAD WIRES
- GAS LINE
- WATER SERVICE
- UNDERGROUND ELECTRIC
- STORM DRAIN LINE
- SANITARY SEWER LINE
- DRAINAGE SWALE
- CHAIN LINK FENCE

- DRAINAGE NOTES:**
- ALL EROSION AND SEDIMENT CONTROLS SHALL BE INSTALLED PRIOR TO THE COMMENCEMENT OF ANY EARTH MOVING ACTIVITIES.
 - THE CONTRACTOR SHALL KEEP ON SITE AT ALL TIMES, ADDITIONAL SILTATION FENCING AND FILTER FABRIC FOR INSTALLATION AS DIRECTED BY THE TOWN TO MITIGATE ANY EMERGENCY CONDITIONS.
 - UPON COMPLETION OF ALL SITE WORK THE CONTRACTOR SHALL INSPECT ALL ON-SITE AND OFF-SITE CATCH BASINS (THAT RECEIVED CATCH BASIN PROTECTION) AND DRAINAGE MANHOLES AND REMOVE ALL SEDIMENT AND DEBRIS THAT HAS ACCUMULATED DURING THE COURSE OF CONSTRUCTION.
 - UNSATURABLE SOILS LOCATED WITHIN THE LIMITS OF THE SUBSURFACE INFILTRATION SYSTEMS SHALL BE REMOVED PRIOR TO INSTALLATION OF THE SYSTEM. THE BOTTOM OF EXCAVATION SHALL BE INSPECTED BY THE PROJECT ENGINEER PRIOR TO THE PLACEMENT OF THE SUBSURFACE CHAMBERS.
 - SUBSURFACE INFILTRATION SYSTEM SUBSOIL SHALL BE OVEREXCAVATED UNTIL THE NATIVE SAND MATERIALS ARE ENCOUNTERED (SUBSURFACE SYSTEM, C1 (SAND) LAYER AT APPROX. EL 86.2). THE SUBSURFACE INFILTRATION SYSTEM SHALL BE PLACED OVER IMPORTED SAND CONFORMING WITH THE REQUIREMENTS OF THE MASSACHUSETTS SANITARY CODE (TITLE V) AS NEEDED.
 - INLET PROTECTION FOR RAIN GARDEN OVERFLOW PIPE SHALL INCLUDE PLACING FILTER FABRIC AND CRUSHED STONE OVER THE PIPE INLET.

REV	DATE	DESCRIPTION	BY	APP
1	11/30/21	DRAINAGE & UTILITIES	ESS	BCM
2	1/3/22	PEER REVIEW LETTER	ESS	BCM
3	2/18/22	PEER REVIEW LETTER	ESS	BCM
4	3/16/22	LOT GRADING	ESS	BCM



SITE DEVELOPMENT PLANS
(ASSESSOR'S MAP 57, PARCEL 70)
320 CONCORD STREET
ROCKLAND, MASSACHUSETTS



OWNERS/APPLICANT:
WALL STREET DEVELOPMENT CORP.
2 WARTHIN CIRCLE
NORWOOD, MASSACHUSETTS 02062

DESIGNED BY: ESS
CHECKED BY: BCM
APPROVED BY: BCM
DATE: OCTOBER 7, 2021
SCALE: 1"=20'
PROJECT NO.: 221-187
DWG. TITLE: **GRADING & DRAINAGE PLAN**

DWG. NO.: **C-2**